

# *Oral Structures and Types of teeth*

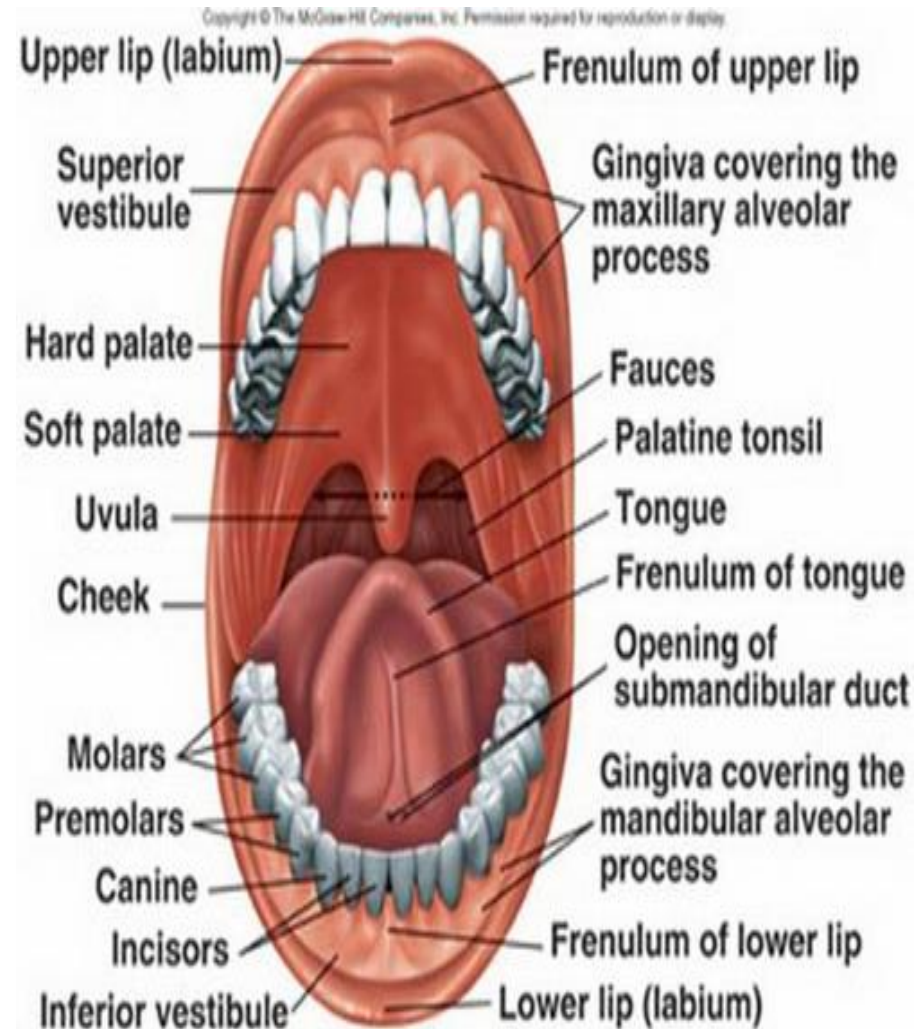


*By:*

*Ms. Zain Malkawi, MSDH*

# Introduction

- *Oral structures are essential in reflecting local and systemic health*
- *Oral anatomy: a fundamental of dental sciences on which the oral health care provider is based.*
- *Oral anatomy used to assess the relationship of teeth, both within and between the arches*



*The color and morphology of the structures may vary with genetic patterns and age.*



U-shaped maxilla



V-shaped maxilla

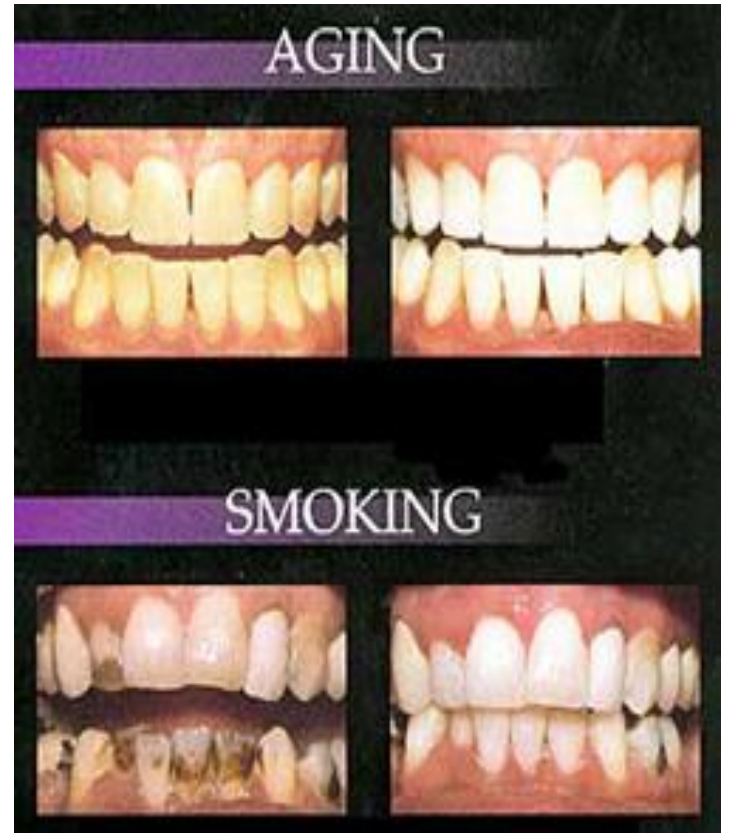




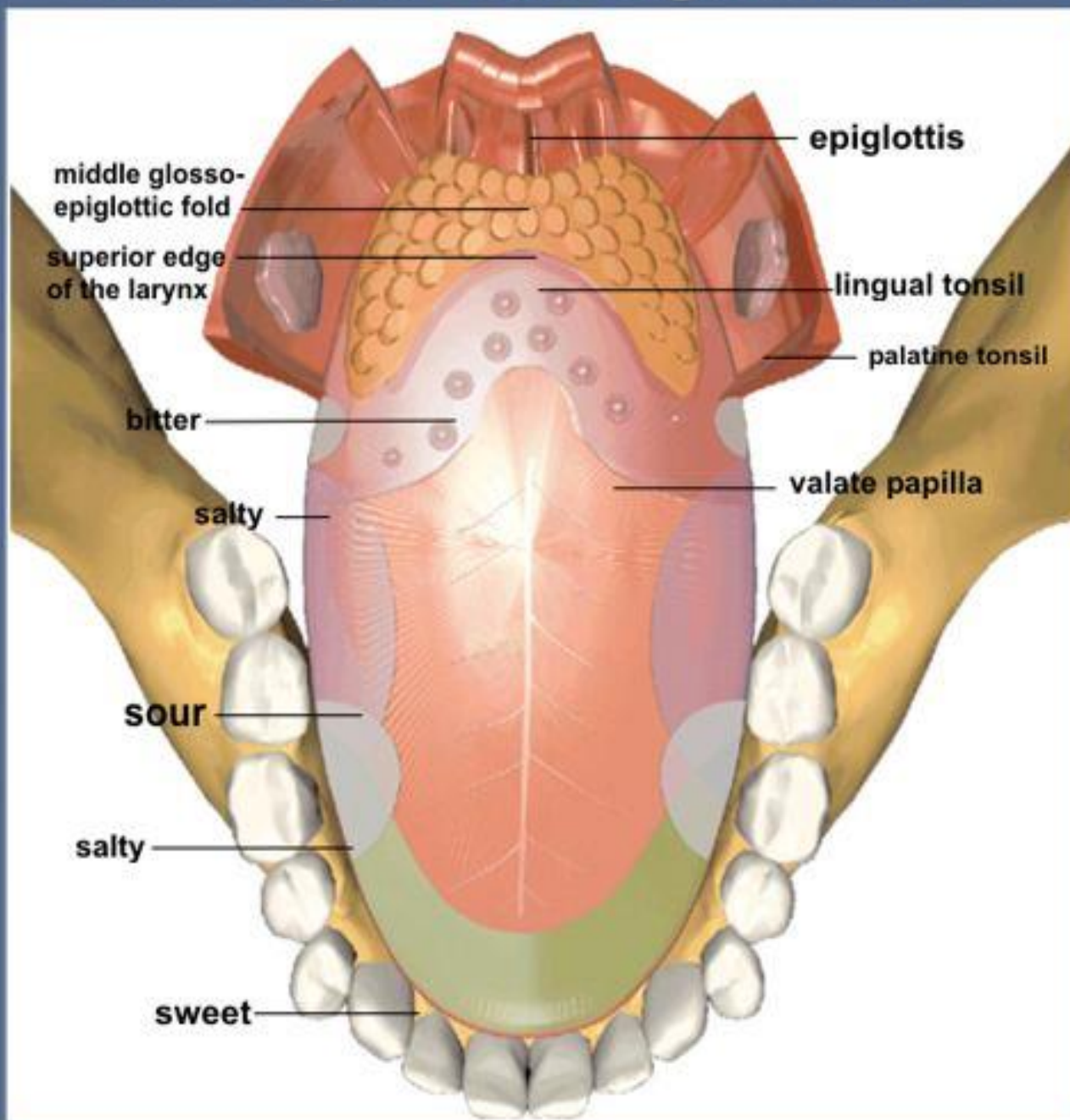
Before

After

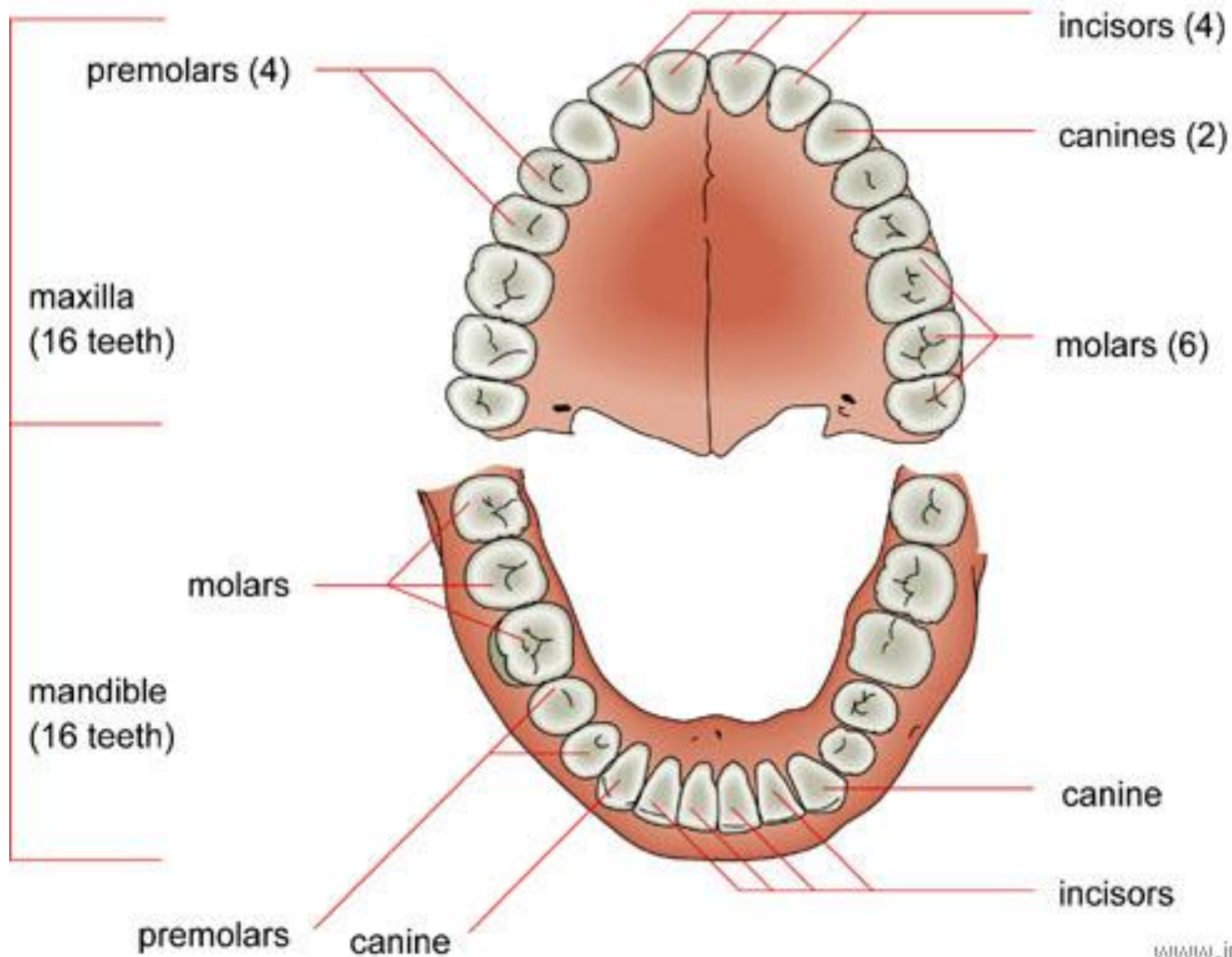
aging



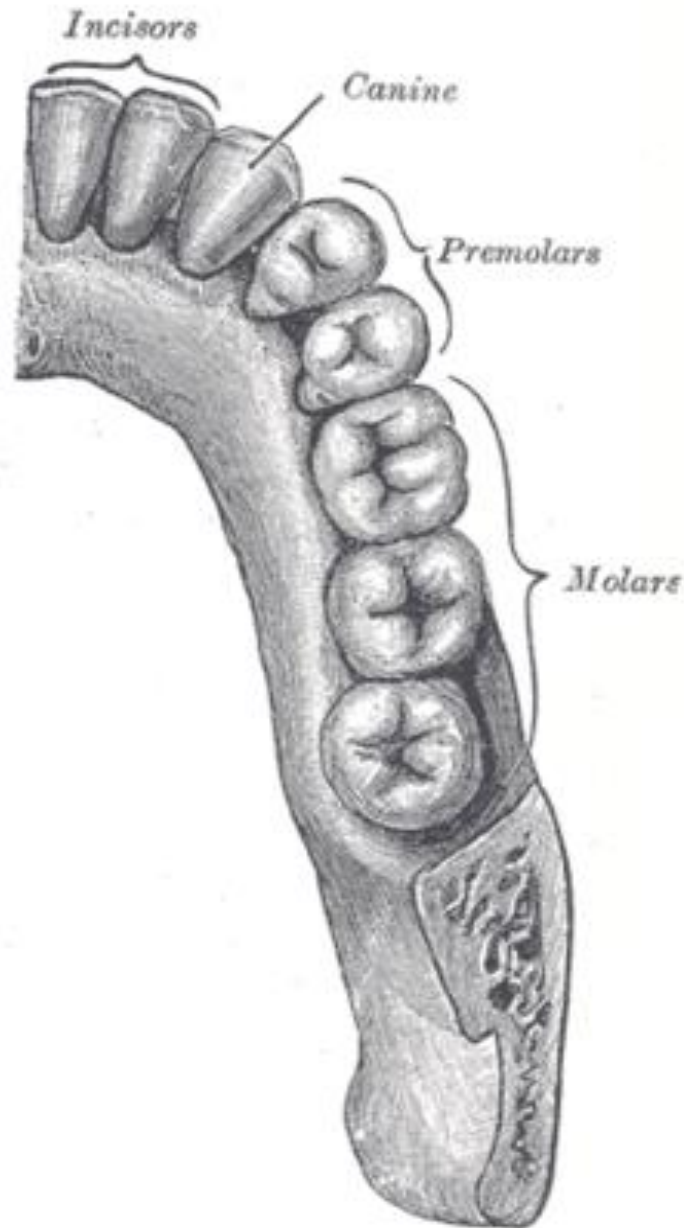
# The Tongue - The Organ of Taste



# DENTAL ARCH OF ADULT



# One Quadrant at the Dental Arches



# *Parts of a Tooth*

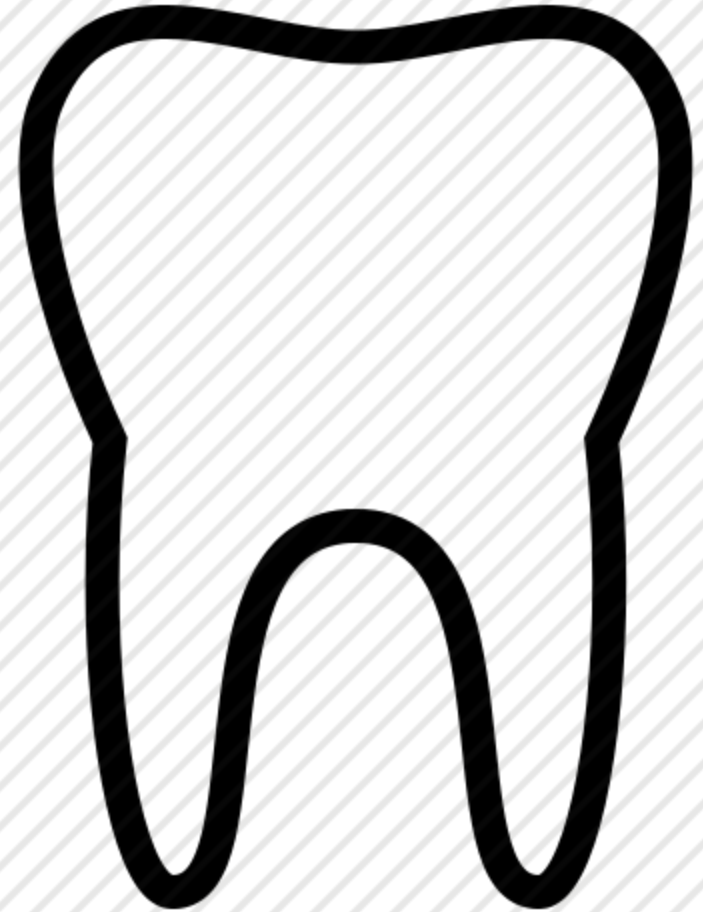
- *Crown*
- *Root*



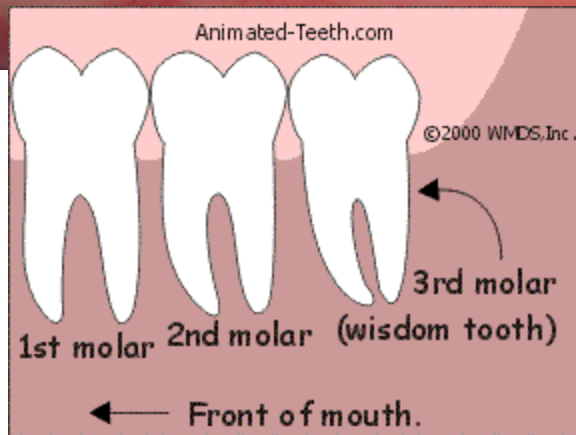


# Parts of a Tooth

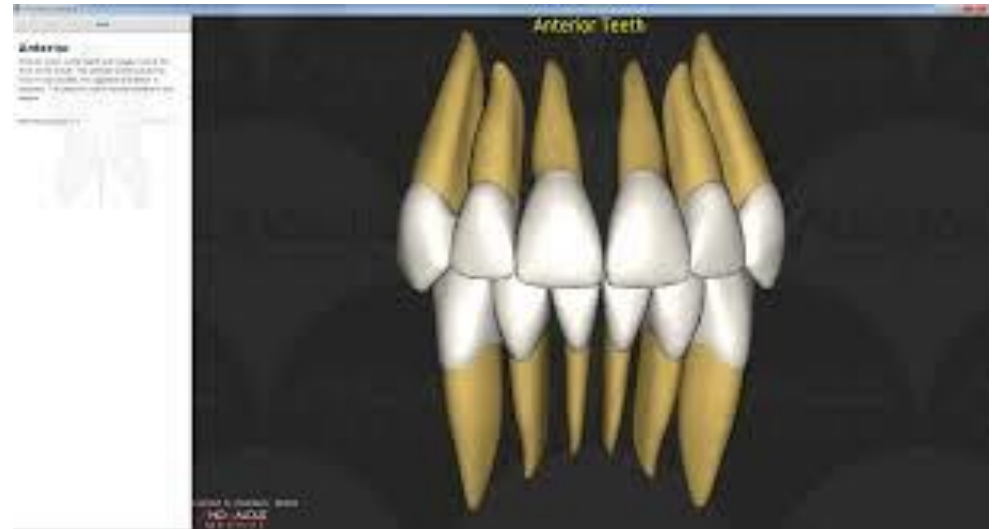
- *Crown: part of the tooth covered by enamel, portion of the tooth visible in the oral cavity.*
- *Root: part of the tooth which covered by cementum.*



- *Posterior teeth*

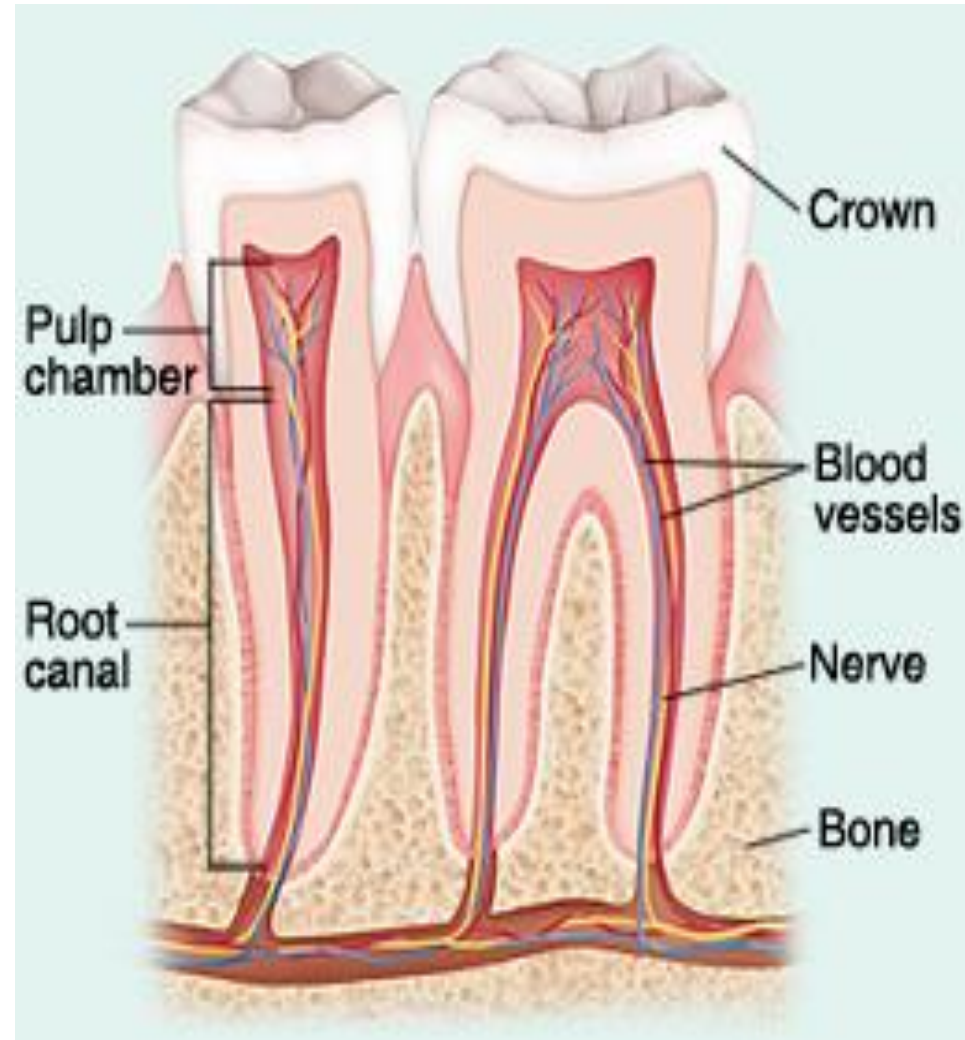


- *Anterior teeth*



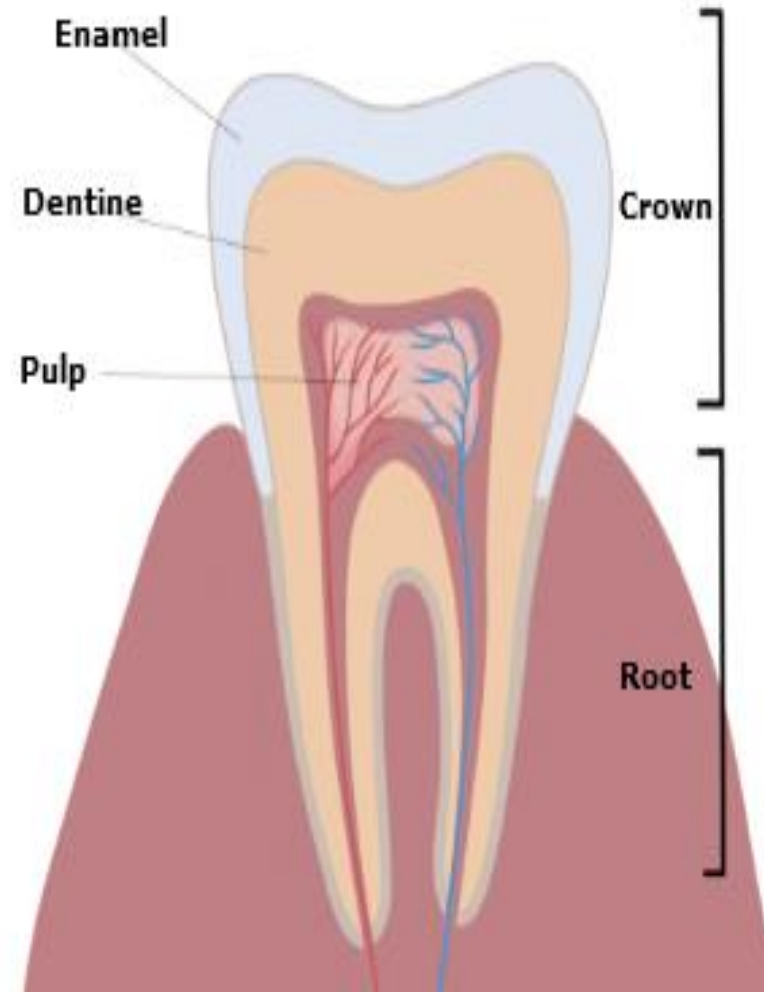
# Root

- *Apex: rounded end of the root*
- *Periapex (periapical): area around the apex of a tooth*
- *Foramen: opening at the apex through which blood vessels and nerves enters*
- *Furcation: area of a two or three rooted tooth where the root divides*

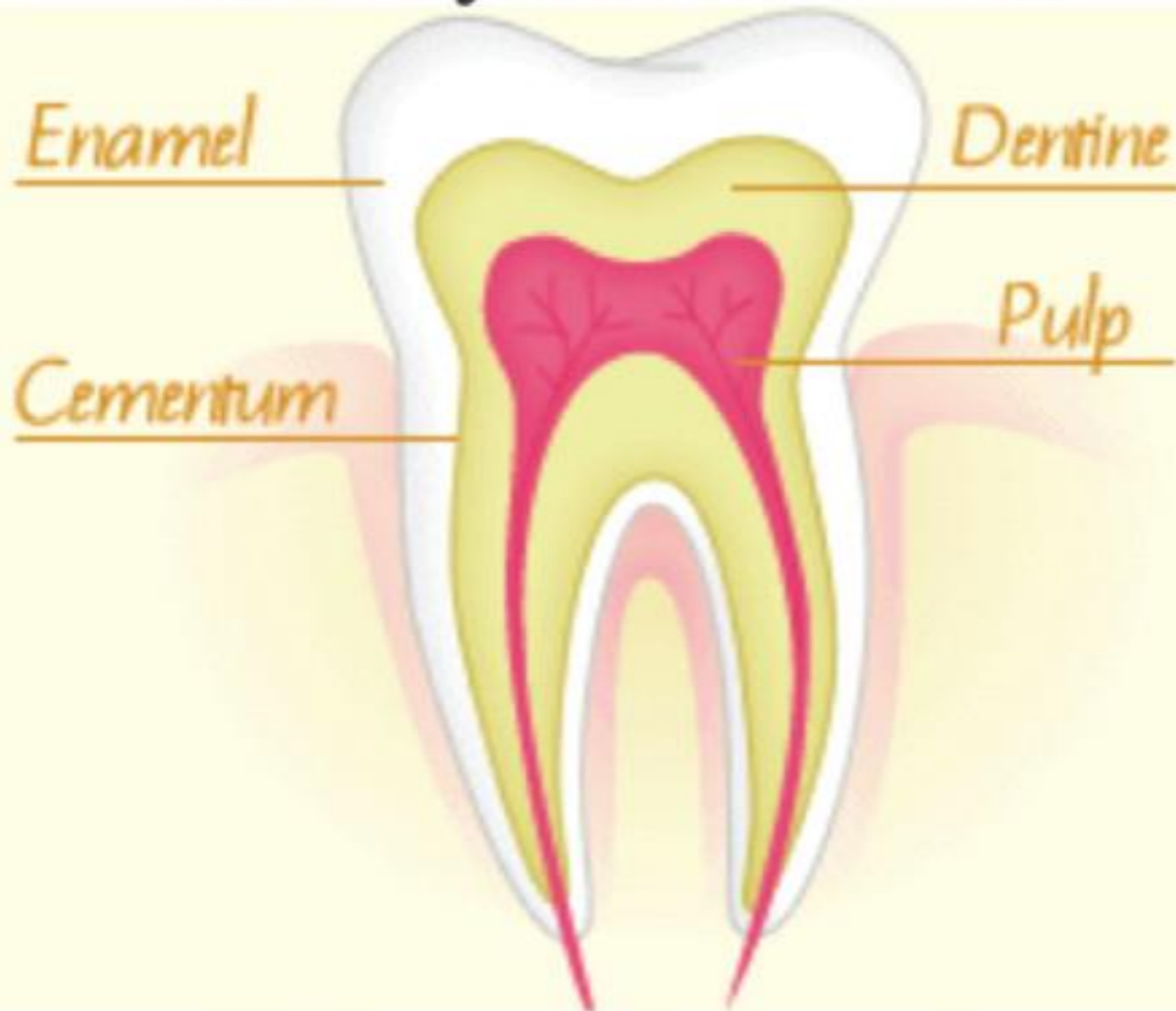


# Tooth Layers

- *Enamel: the hardest calcified tissue covering the dentine in the crown of the tooth (96%) mineralized.*
- *Dentine: hard calcified tissue surrounding the pulp and underlying the enamel and cementum. Makes up the bulk of the tooth, (70%) mineralized.*

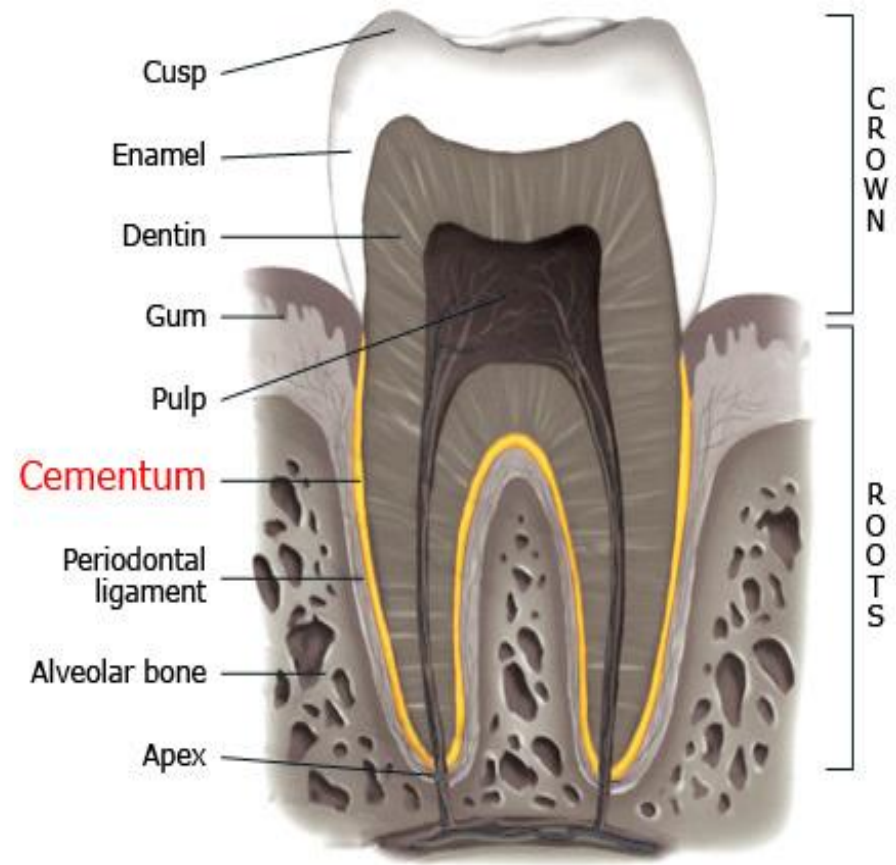


# The Layers of a Tooth

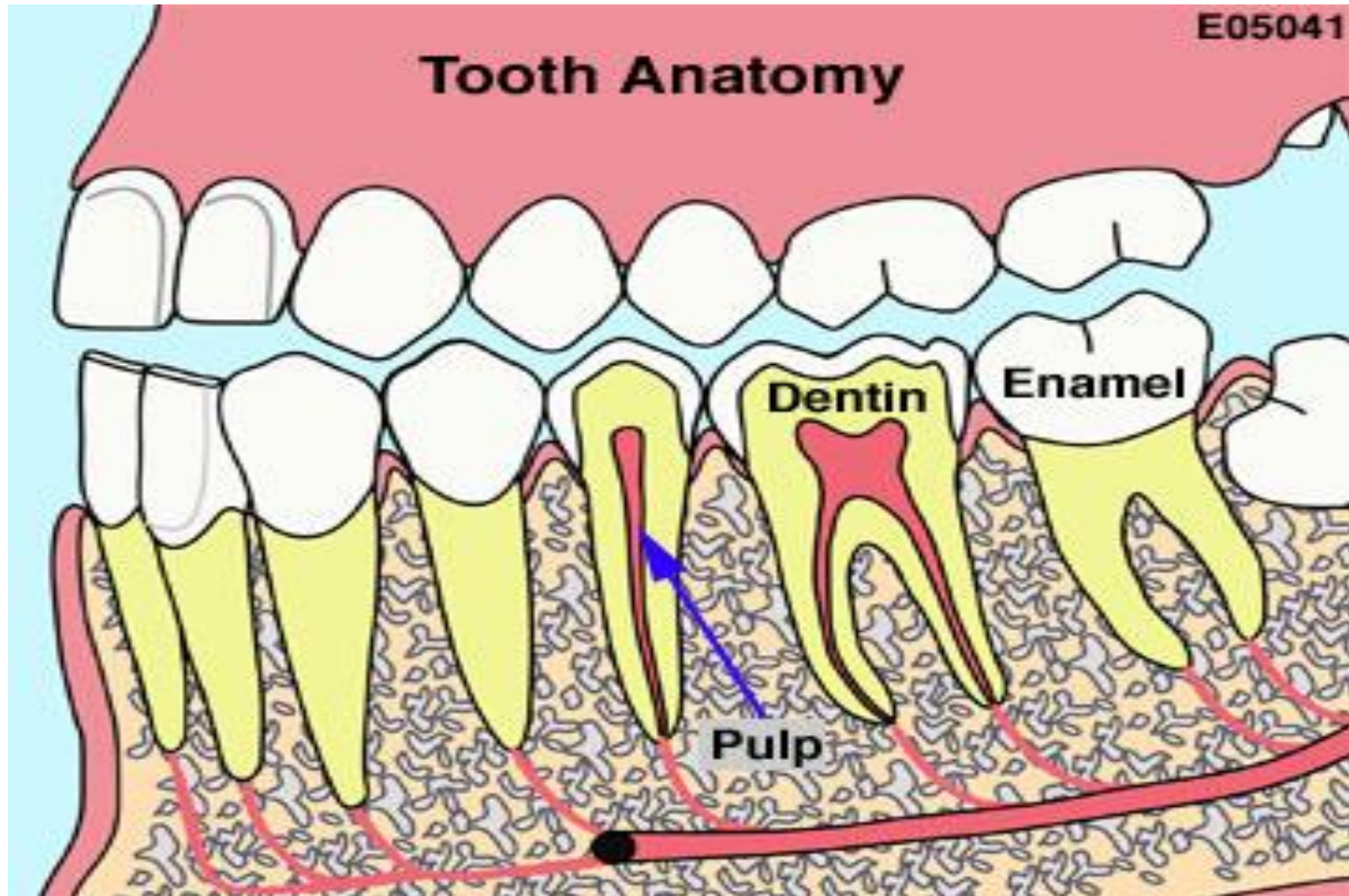


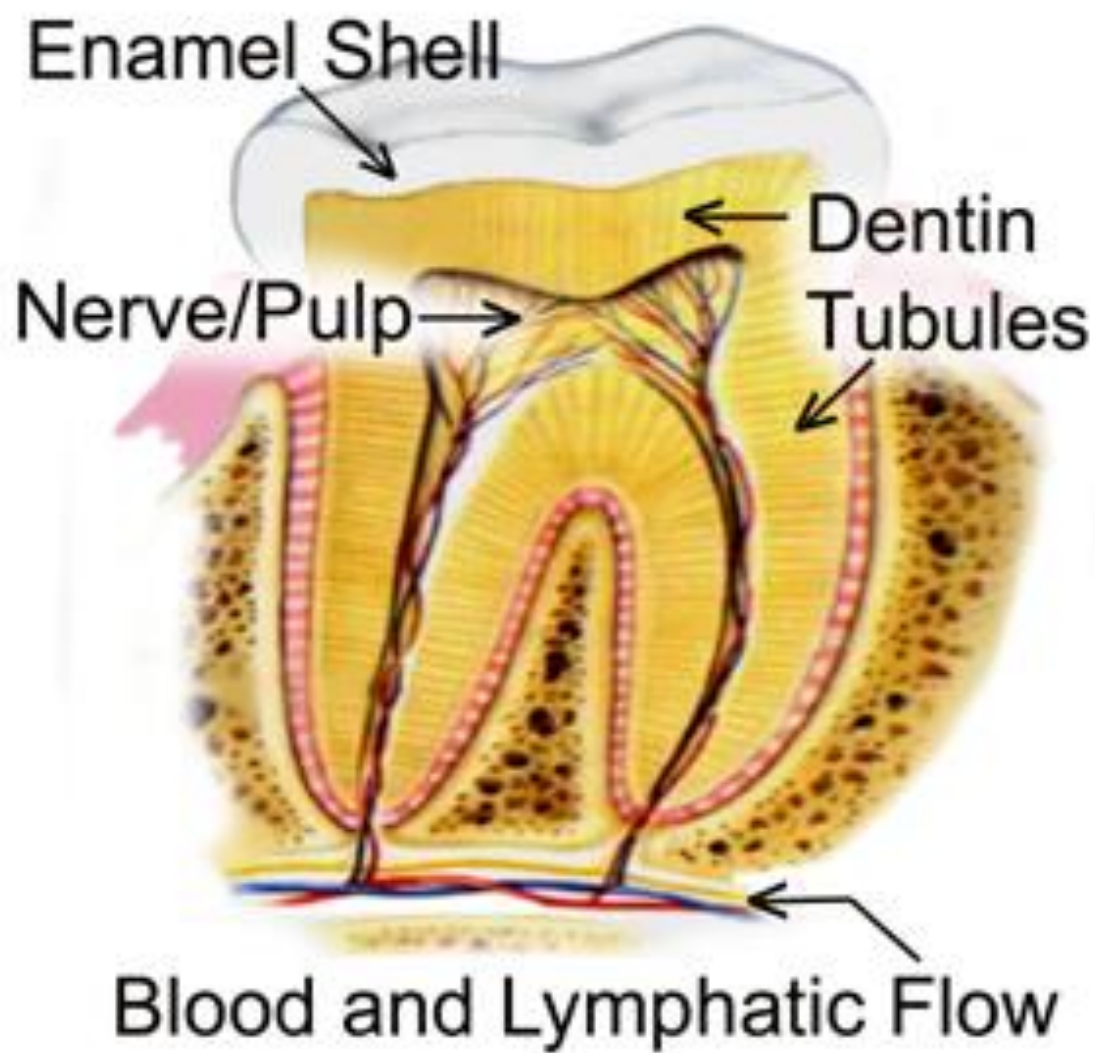
# Tooth Layers

- *Pulp: the innermost noncalcified tissues containing blood vessels, lymphatics and nerves*
- *Cementum: bone like calcified tissue covering the dentin in the root of the tooth, 50% mineralized.*



# *Tooth Layers*

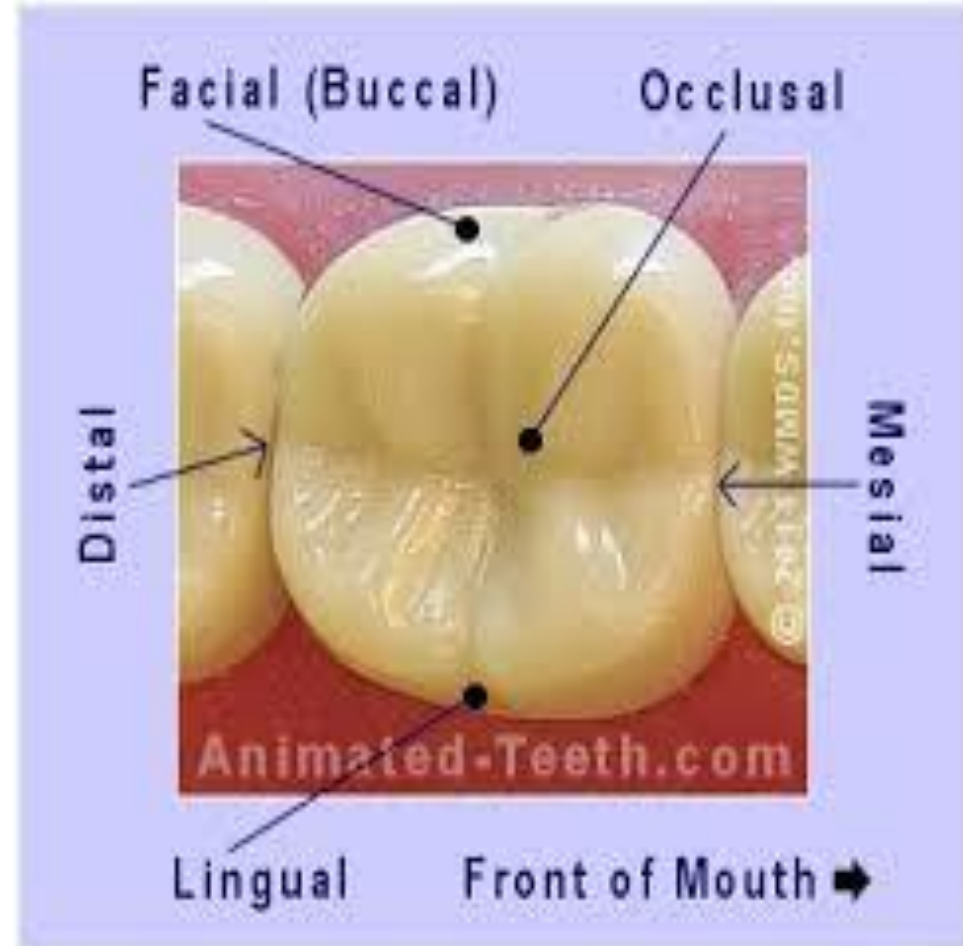






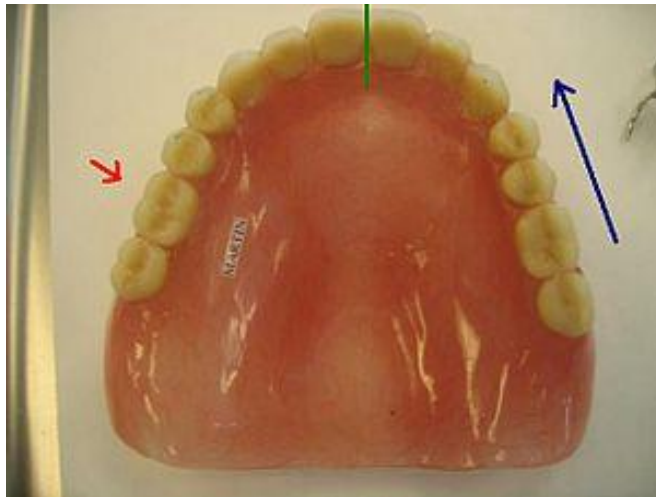
# Tooth Surfaces

- *Facial: Labial , Buccal*
- *Lingual: called palatal for upper arch.*
- *Proximal: mesial , distal*
- *Contact area: area where that touches the adjacent tooth in the same arch.*



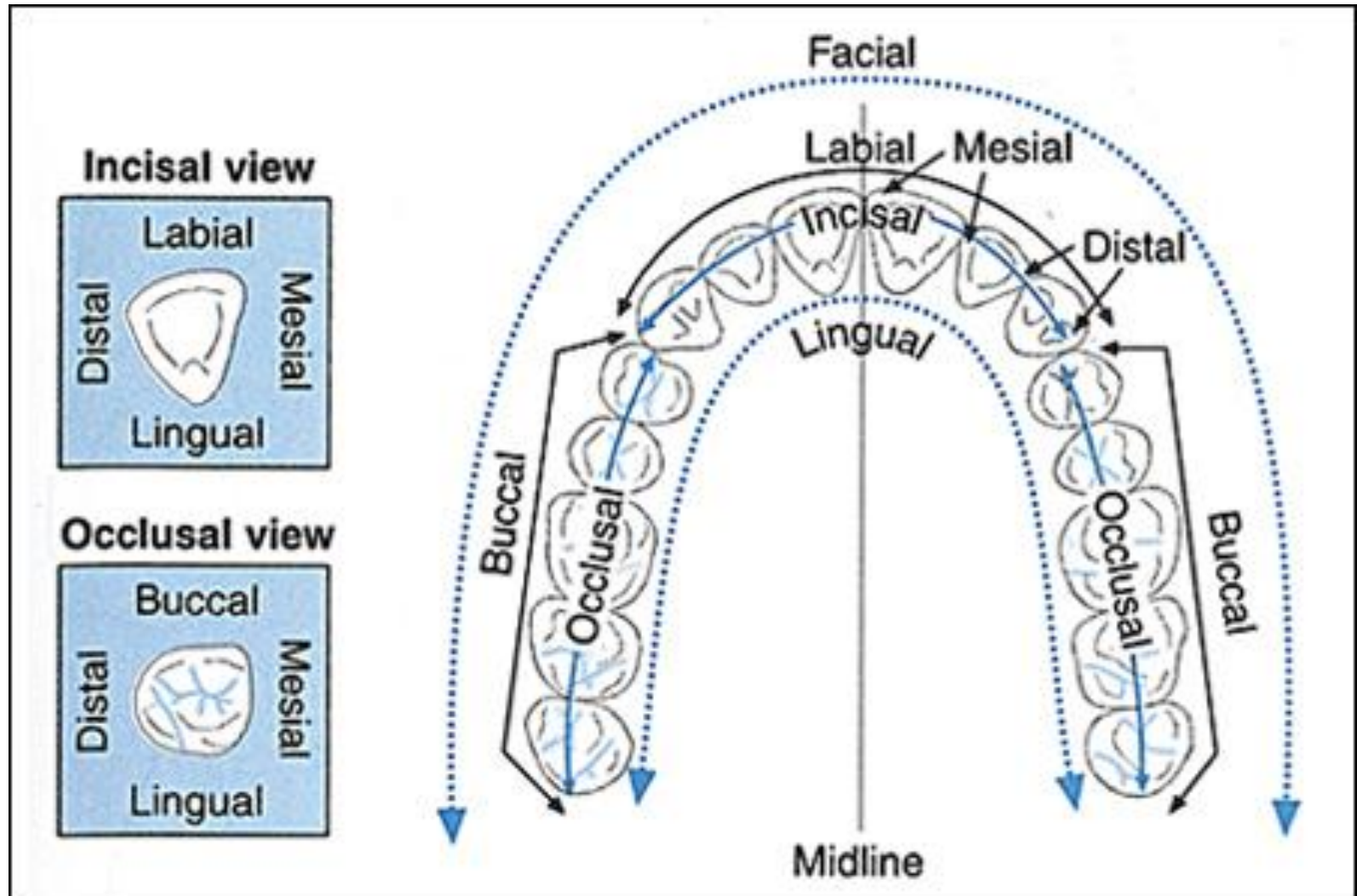
# Tooth Surfaces

- *Incisal: surface of an incisor which toward the opposite arch, the biting surface, the newly erupted “permanent incisors have mamelons”:* projections of enamel on this surface.

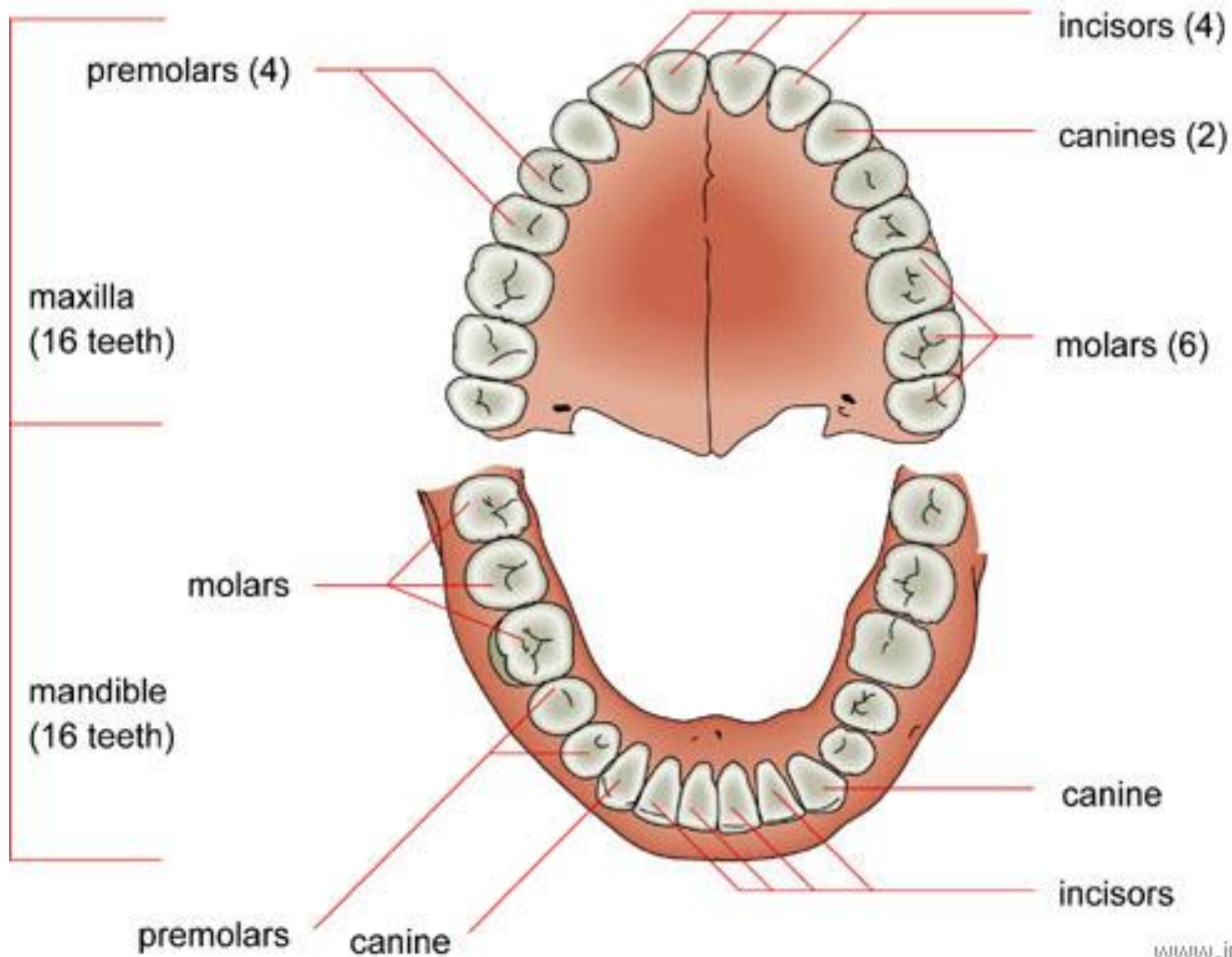


- *Occlusal: surface of posterior teeth that is toward the opposite arch, the chewing surface.*

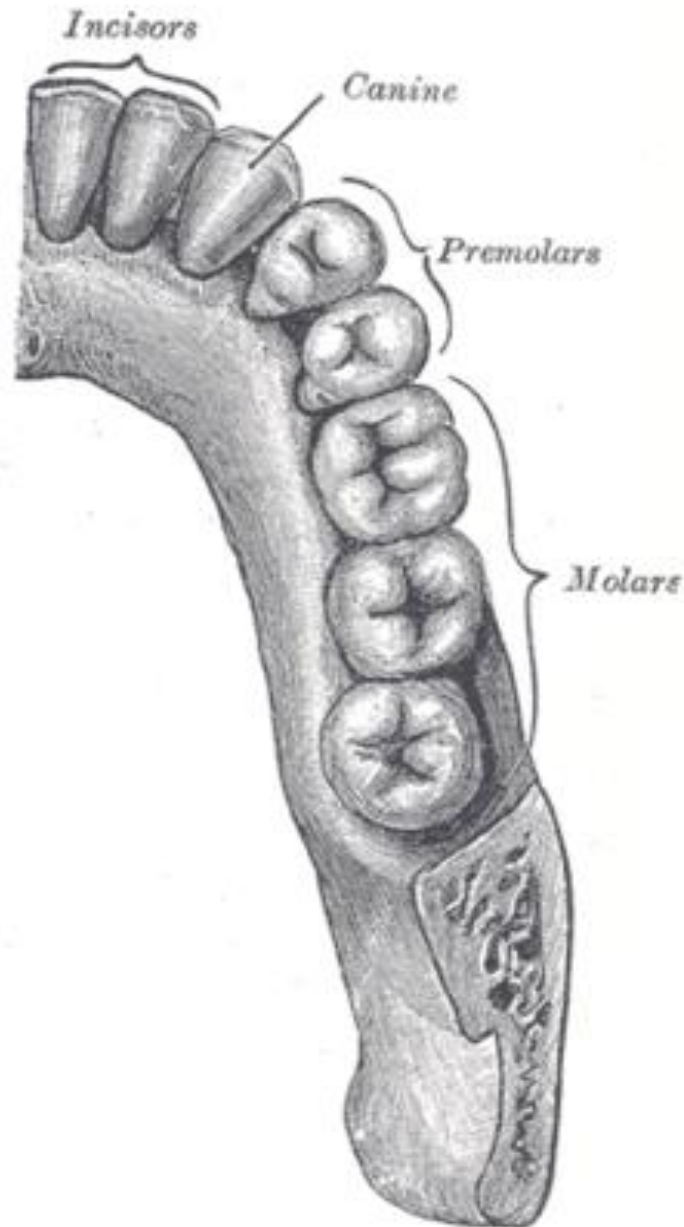
# Tooth Sides



# DENTAL ARCH OF ADULT

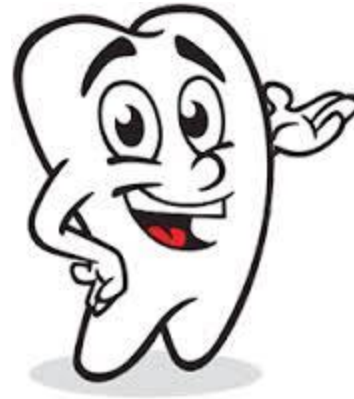


# One Quadrant at the Dental Arches



# *Types of Teeth*

- *Primary Teeth (Deciduous Teeth)*



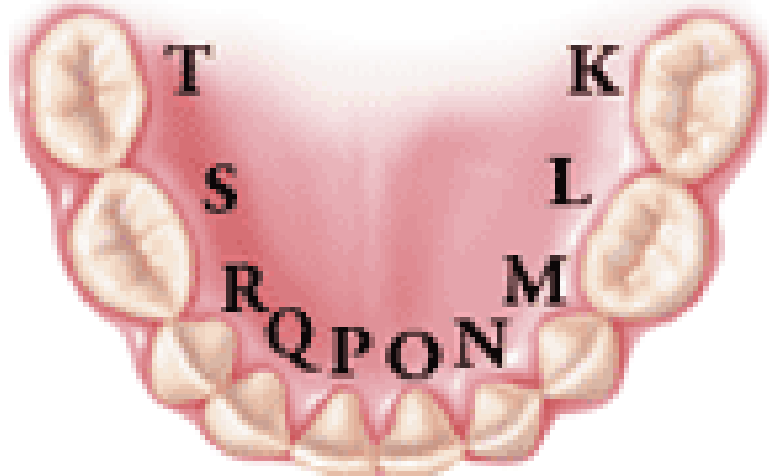
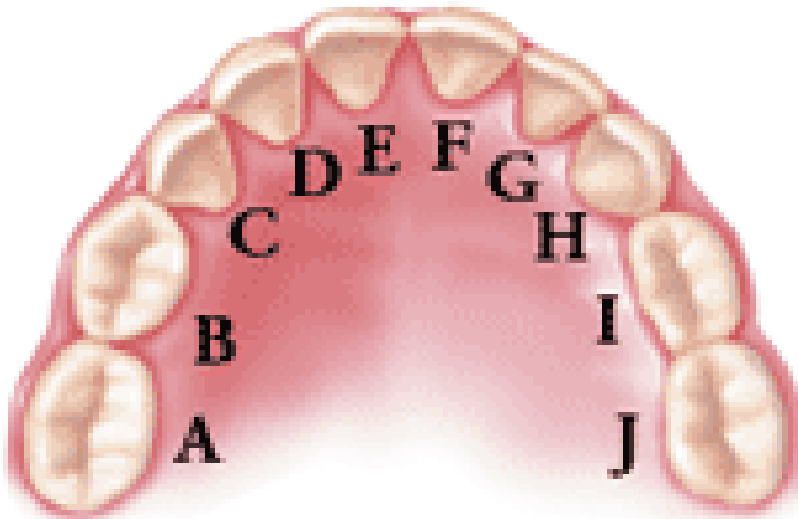
- *Permanent Teeth (Adult Teeth)*

# *The Primary Dentition*

- *Primary dentition (deciduous) consists of 20 teeth, 8 incisors, 4 canines, and 8 molars.*



# *Primary Teeth (Dental arch)*





# *The Primary Dentition*

- *The anatomy of the primary teeth is similar to that of permanent teeth except :*
  - ✓ *primary teeth are smaller in size*
  - ✓ *They are whiter*
  - ✓ *The crowns are shorter*
  - ✓ *The occlusal table is narrower faciolingually*
  - ✓ *Pulp chambers are larger*
  - ✓ *Roots are longer and slender*
  - ✓ *Root Trunk: area from the cemento-enamel junction to the furcation are shorter*
  - ✓ *Have fewer anomalies and variations in tooth form*

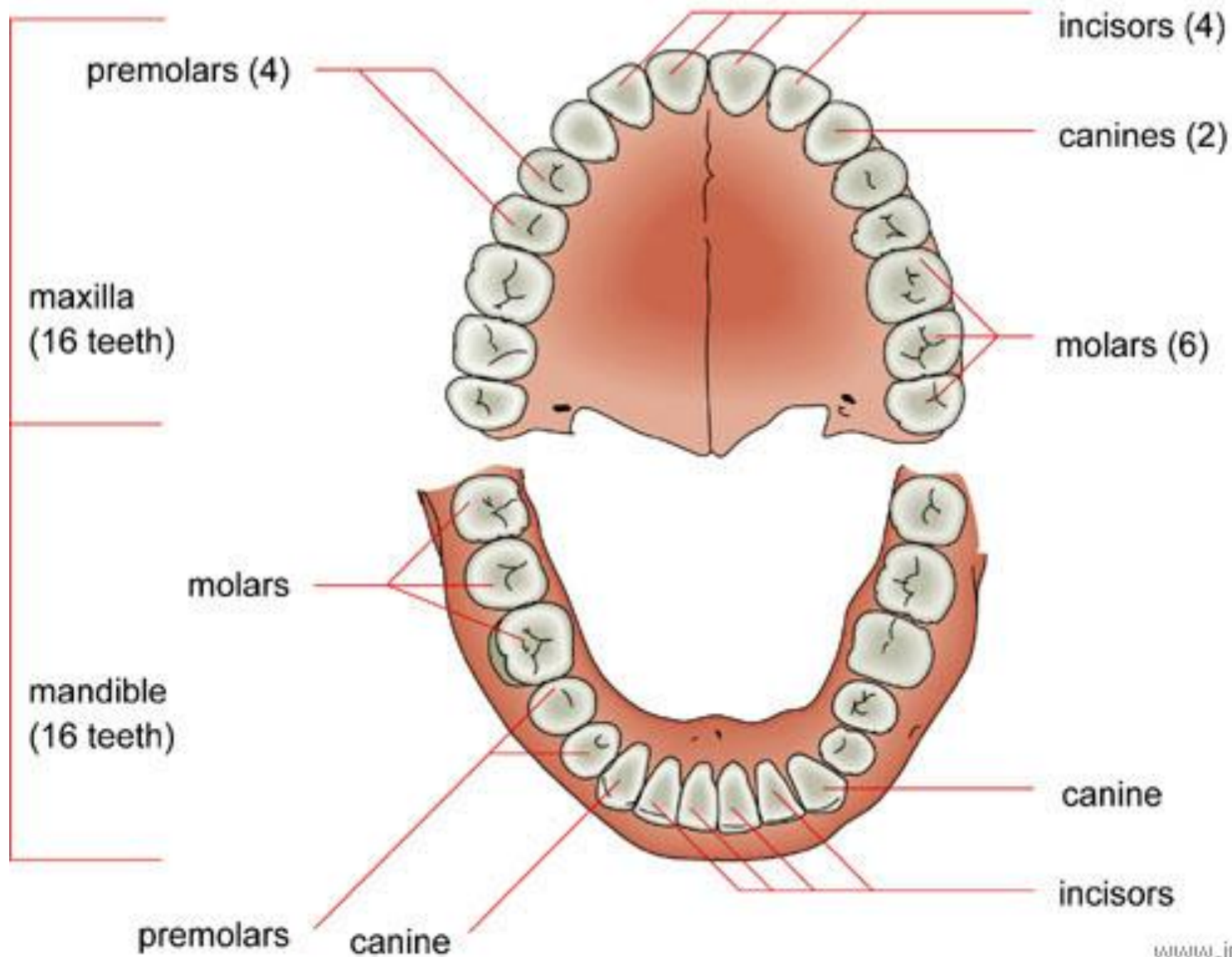


# Permanent Dentition

- *Consists of 8 incisors, 4 canines, 8 premolars and 12 molars*
- *Teeth have one, two, or three roots*



# DENTAL ARCH OF ADULT



Thanks

